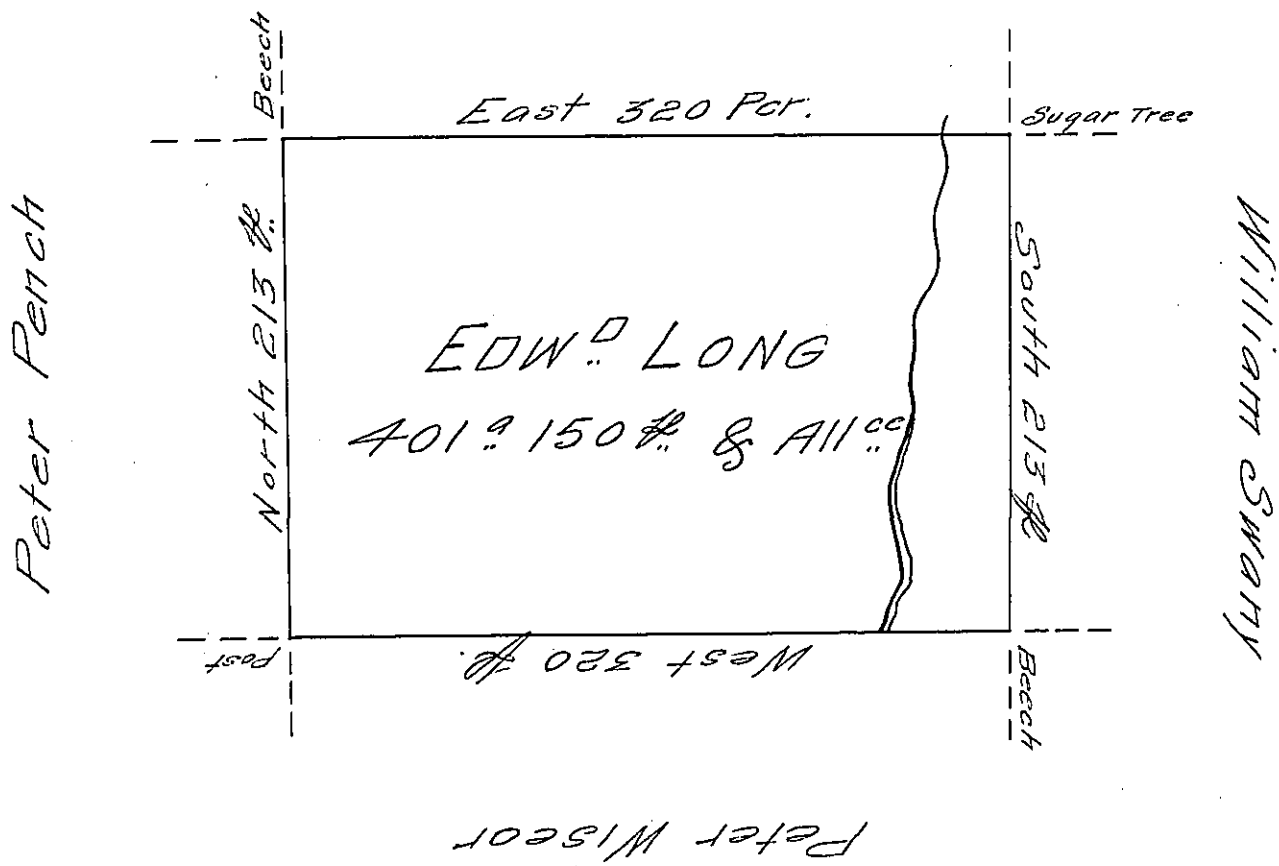


Robert Lee



Situate on the West Side of French Creek in Allegheny County Containing 401 Acres and 150 Perches and allowance of Six $\frac{1}{2}$ Cent for Roads &c. Surveyed the 12th day of June 1795. In pursuance of his Improvement dated the 23^d day of March 1795.

W^m Power D^y Sr.

To Dan^l Brodhead Esq^r }
 Surveyor General }

IN TESTIMONY that the above is a copy of the original remaining on file in the Department of Internal Affairs of Pennsylvania, made conformably to an Act of Assembly approved the 16th day of February, 1833, I have hereunto set my Hand and caused the Seal of said Department to be affixed at Harrisburg, this twenty-seventh day of September 1906

Loac R. Brown
 Secretary of Internal Affairs.